

ASHFIELD Box Pack Specifications



SATIN NICKEL



MATTE BLACK



These finishes are available with Microban anti-microbial coating: 15 and 514

AVAILABLE FUNCTIONS:



Passage





Privacy



Entry



Inactive

ADH		 20 min.	 3 Hour	Satin Nickel	Matte Black
Passage	GLA101 ADH	<input type="checkbox"/>	<input type="checkbox"/>	<input type="checkbox"/>	<input type="checkbox"/>
Privacy	GLA331 ADH	<input type="checkbox"/>	<input type="checkbox"/>	<input type="checkbox"/>	<input type="checkbox"/>
Entry	GLA535 ADH	<input type="checkbox"/>	<input type="checkbox"/>	<input type="checkbox"/>	<input type="checkbox"/>
Inactive	GLA12 ADH	<input type="checkbox"/>	<input type="checkbox"/>	<input type="checkbox"/>	<input type="checkbox"/>

SPECIFICATIONS

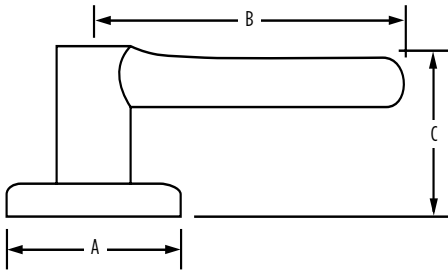


20 min.



3 Hour

Door Prep	Cross Bore 2-1/8" Edge Bore 1" Latch Face 1" x 2-1/4"
Backset	Adjustable to 2-3/8" or 2-3/4"
Door Thickness	1-3/8" - 1-3/4" doors standard. 2-1/4" doors optional
Cylinder	SmartKey standard, see specific product for more WS and KW availability
Faceplates	1" x 2-1/4". Round corner, square corner and drive-in available in box
Strikes	2-1/4" full lip. Other options available
Bolt	1/2" throw. Nickel plated
Door Handing	Reversible for right or left-hand doors
ANSI/BHMA	A156.2 Grade 2
ADA	Functions GLA 101, GLA 12 satisfies section 4.13.9 ADA Requirement
UL	Fire rating, see specific product for availability
ASTM	All Weiser product meets ASTM E 331 water penetration testing



Dimensions	A	B	C	C (Keyed)
Ashfield	2 5/16"	4 3/16"	2 9/16"	2 7/8"

WARRANTY:

Weiser™ products provide a "Lifetime Mechanical Warranty" that covers all defects in material and workmanship. For more information, please visit ca.weiserlock.com/en/warranty/.